



INTERSTATE TECHNOLOGY & REGULATORY COUNCIL

ATTENTION

The following document contains information that may not provide current best practices for evaluating or implementing the specified technology or may no longer be supported by current regulations. Therefore, access to the document has been removed from the ITRC website. If you are interested in reviewing the following archived document, please email ITRC at itrc@itrcweb.org

Thank you.

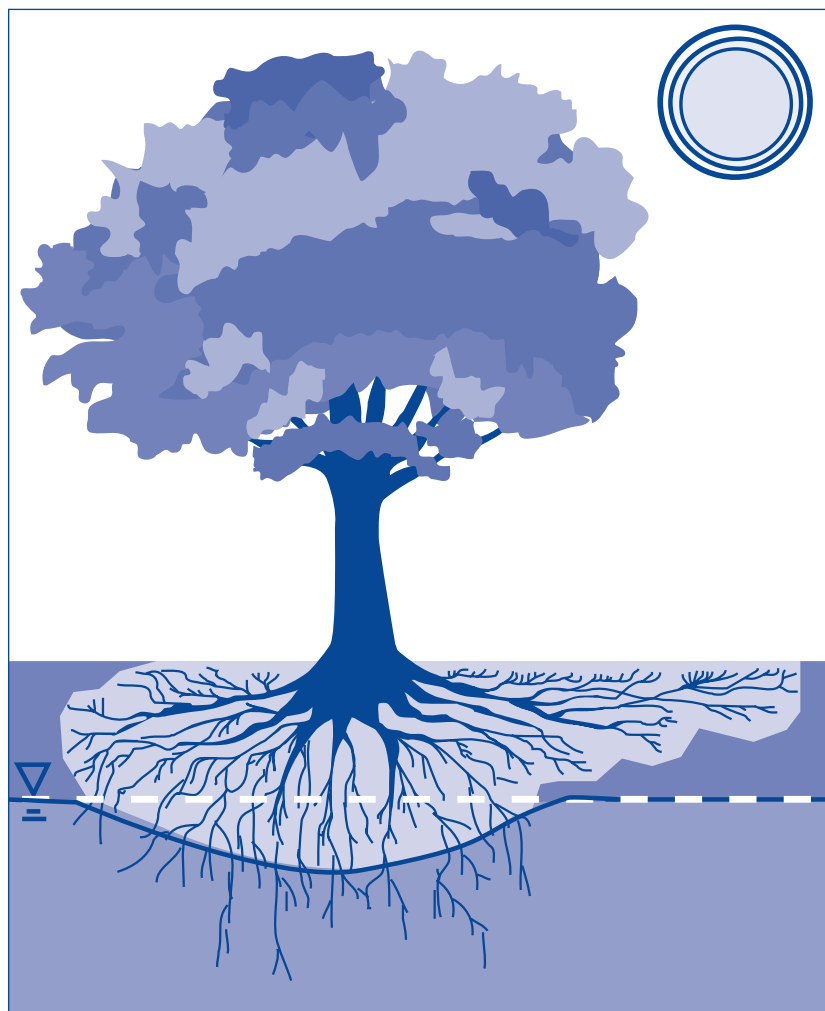


INTERSTATE TECHNOLOGY & REGULATORY COUNCIL



Decision Tree

Phytoremediation



December 1999

Prepared by
Interstate Technology and Regulatory Cooperation Work Group
Phytoremediation Work Team